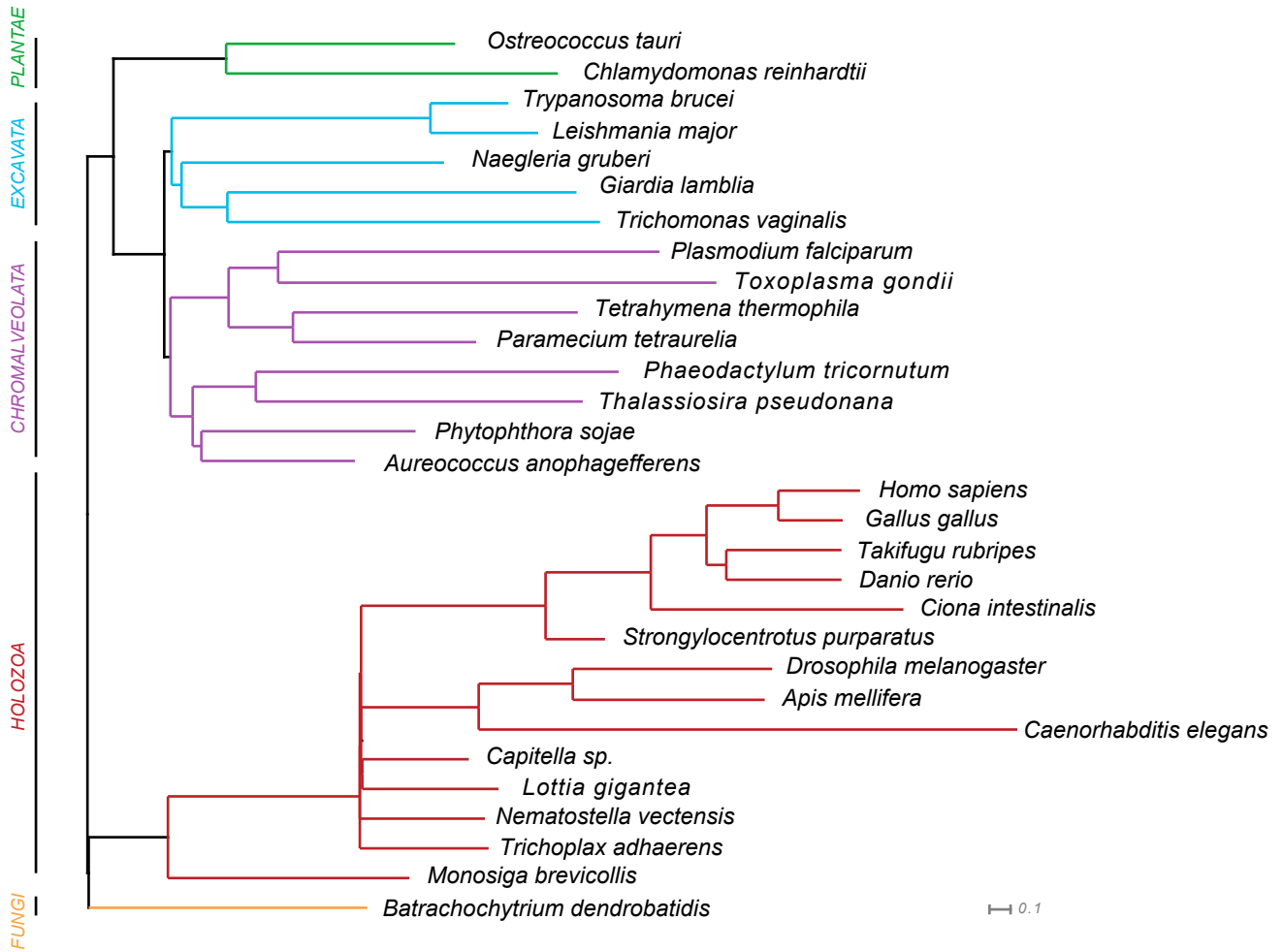


**Supplemental Figure S2. Constrained phylogeny of SAS-4 and SAS-6.** Bayesian trees with fixed topology, representing current understanding of eukaryotic evolution, were produced for identified (A) SAS-4 and (B) SAS-6 homologues, including the *C. elegans* SAS-4 and SAS-6 sequences taken from the literature.

Figure S2. Constrained phylogeny of SAS-4 and SAS-6.

A SAS-4



B SAS-6

